

January 2015

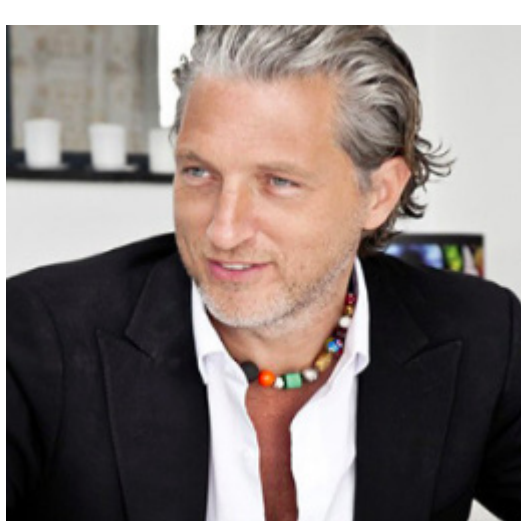
News Letter



Kartell



Caracasbaaiweg 2c (Salina Rotonde) Curacao | www.lot1038.com | +5999-4612634



MARCEL WANDERS



TUUCI

Marcel Wanders is a product and interior designer who drew international recognition for his Knotted Chair produced by Droog Design in 1996. His work is ubiquitous; designing for leading international companies such as Flos, Alessi, Puma, KLM Royal Dutch Airlines, MAC Cosmetics, Cappellini, B&B Italia, Moroso and Target. Wanders also designs for architectural projects, such as the Kameha Grand hotel in Bonn, the Mondrian South Beach hotel in Miami and the Villa Moda store in Bahrain. In addition to running his studio, Wanders is cofounder and Artistic Director of the successful design label Moooi (2001).

He exhibits widely and his work is included in such significant museum collections as MoMA New York, The Stedelijk Museum, Amsterdam, and the V&A Museum, London.

Wanders has further published numerous books and is extensively profiled in the global media, appearing in such publications as the New York Times, Domus, The Financial Times and Wallpaper Magazine.

TUUCI's design philosophy is to create a harmonious relationship between our shade products and the outdoor environments in which they exist. We strive to deliver dynamic and inspiring designs which transform any outdoor space into luxurious settings that are both intimate and peaceful. Good design can only exist at the intersection of pure form and function. TUUCI seeks to reduce the elements of shade to their most basic function and apply a unique form which is harmonious with the natural world. It is only in this space that we have achieved our purpose.



FLOS

Tatou - Flos by Patricia Urquiola

The name Tatou is the French word for 'armadillo', the surprising mammal with a horny protective shell. Likewise, Tatou's shell protects against annoying direct light in your eyes, but at the same time it is slender and light. Tatou is presented in floor, table and suspension models, in two different sizes and three finishes: white, black or plum dome, combined with a base that is white, black or metallic in shades of pink.



VONDOM

VONDOM is born with the anxiety and concern for creating a new way of understanding the world of furniture, interior and exterior decoration. One of the most innovative processes in the field of decoration is the rotational molding which is the main manufacturing technology used for the development of new products as well as the use of textiles, metals, glass ... In VONDOM we work to create art, always searching the natural beauty, giving our products a unique personality and bearing in mind the vanguard of contemporary design, simple and balanced.



VITRA

With its bright, cheerful colors and smooth curves, the Panton Chair has always been a favorite of children – both as a chair and as a plaything. This led Verner Pantan to consider the idea of producing a child-size version of the chair together with Vitra over 35 years ago.

Proving impossible at the time for economic reasons, this aim was finally achieved in 2008 with the introduction of Pantan Junior, a chair based on the designer's original plans. Identical to the regular model with regard to material and shape, the children's chair is approximately 25 percent smaller than the full-size Pantan Chair. This makes Pantan Junior, which is available in six different colors, an ideal chair for children in nursery and elementary school.



WEBSITE | LIKE ON FACEBOOK | EMAIL US

interior design
fabrics furniture
lighting accessories
parasols tiles

Now in store!

BUM BUM speakers from VONDOM®



vitra. LINTELOO fatboy FLOS FOSCARINI Artemide PIET HEIN EEK TRIBU
DEDON Kartell moooi VONDOM TUUCI DESIGNERS GUILD driade